

Model: Martini-C3		Date: 01-Sep-06	No.: RB246001a
Subject: Firmware Release History (Engine)		Prepared by: S. Watanabe	
From: 2nd Tech Support Sec. Service Support Dept.			
Classification:	<input type="checkbox"/> Troubleshooting <input type="checkbox"/> Mechanical <input type="checkbox"/> Paper path <input type="checkbox"/> Product Safety	<input type="checkbox"/> Part information <input type="checkbox"/> Electrical <input type="checkbox"/> Transmit/receive <input checked="" type="checkbox"/> Other ()	<input type="checkbox"/> Action required <input type="checkbox"/> Service manual revision <input type="checkbox"/> Retrofit information

This RTB has been issued to announce the firmware release information for the Engine.

Version	Program No.	C. SUM	Effective Date
1.09:60	B2475127C	-	September 2006 Production
1.08:53	B2475127B	9F4A	March 2006 Production

Version	Symptom Corrected
1.09:60	1. <i>The machine does not print out when SC317 occurs.</i> 2. <i>SC590 is displayed when SC495 occurs.</i>
1.08:53	1st Mass Production

Model: Martini-C3		Date: 04-Jul-06	No.: RB246002a
Subject: Firmware Release History (Sysyem)		Prepared by: S. Watanabe	
From: 2nd Tech Support Sec. Service Support Dept.			
Classification:	<input type="checkbox"/> Troubleshooting	<input type="checkbox"/> Part information	<input type="checkbox"/> Action required
	<input type="checkbox"/> Mechanical	<input type="checkbox"/> Electrical	<input type="checkbox"/> Service manual revision
	<input type="checkbox"/> Paper path	<input type="checkbox"/> Transmit/receive	<input type="checkbox"/> Retrofit information
	<input type="checkbox"/> Product Safety	<input checked="" type="checkbox"/> Other ()	

This RTB has been issued to announce the firmware release information for the System/Copy.

Version	Program No.	C. SUM	Effective Date
1.11	B2475101E	-	May 2006 Production
1.10	B2475101D	7974	March 2006 Production

Version	Symptom Corrected
1.11	<p>1. Fixed: A preset job cannot be deleted.</p> <p>2. Fixed: The PS option might not start when the device powers up, if an SDK is installed on the same card as the PS option. As a result, no functions that use the PS option will work properly (GFPR#ED06020001).</p> <p>3. UserCode has been removed as a search criteria for finding destinations in the address book for security reasons.</p> <p>Note: Removal of this search criteria requires both Controller firmware Ver 1.11 or later and Scanner firmware Ver Ver m_3.15 or later.</p>
1.10	1st Mass Production

Model: Martini-C3		Date: 08-Aug-06	No.: RB246003b
Subject: Firmware Release History (NCS)		Prepared by: S. Watanabe	
From: 2nd Tech Support Sec. Service Support Dept.			
Classification:	<input type="checkbox"/> Troubleshooting	<input type="checkbox"/> Part information	<input type="checkbox"/> Action required
	<input type="checkbox"/> Mechanical	<input type="checkbox"/> Electrical	<input type="checkbox"/> Service manual revision
	<input type="checkbox"/> Paper path	<input type="checkbox"/> Transmit/receive	<input type="checkbox"/> Retrofit information
	<input type="checkbox"/> Product Safety	<input checked="" type="checkbox"/> Other ()	

This RTB has been issued to announce the firmware release information for the Network Support.

Version	Program No.	C. SUM	Effective Date
5.11c	B2475102C	-	Aug 2006 Production
5.10c	B2475102B	-	May 2006 Production
5.07.1c	B2475102A	8120	March 2006 Production

Version	Symptom Corrected
5.11c	Fixed: The device might not be able to retrieve an IP address from a DHCP server under specific conditions (GFPR#RC06060003).
5.10c	<ol style="list-style-type: none"> The device might not obtain an IP address from DHCP server if Autonet is disabled. In some cases, "Cannot connect with DHCP Server.(101)" will be displayed on the operation panel. The device cannot connect in environments with multiple NetWare servers in the same NDS tree. (GFPR#RC05120001/RC06020010/RE06030007/RE06030001) The SSID is shown as blank in the Configuration Page, even if the SSID has been configured. This will only happen if the SSID is exactly 32 characters in length.
5.07.1c	1st Mass Production

Model: Martini-C3		Date: 2-May-06	No.: RB246004
Subject: Firmware Release History (Animation)		Prepared by: S. Watanabe	
From: 2nd Tech Support Sec. Service Support Dept.			
Classification:	<input type="checkbox"/> Troubleshooting	<input type="checkbox"/> Part information	<input type="checkbox"/> Action required
	<input type="checkbox"/> Mechanical	<input type="checkbox"/> Electrical	<input type="checkbox"/> Service manual revision
	<input type="checkbox"/> Paper path	<input type="checkbox"/> Transmit/receive	<input type="checkbox"/> Retrofit information
	<input type="checkbox"/> Product Safety	<input checked="" type="checkbox"/> Other ()	

This RTB has been issued to announce the firmware release information for the Animation.

Version	Program No.	C. SUM	Effective Date
0.02	B2475104	-	March 2006 Production

Version	Symptom Corrected
0.02	1st Mass Production

Reissued:07-Dec-06

Model: Martini-C3	Date: 2-May-06	No.: RB246005a
-------------------	----------------	----------------

RTB Reissue

The items in bold italics have been corrected.

Subject: Firmware Release History (Language)		Prepared by: S. Watanabe	
From: 2nd Tech Support Sec. Service Support Dept.			
Classification:	<input type="checkbox"/> Troubleshooting	<input type="checkbox"/> Part information	<input type="checkbox"/> Action required
	<input type="checkbox"/> Mechanical	<input type="checkbox"/> Electrical	<input type="checkbox"/> Service manual revision
	<input type="checkbox"/> Paper path	<input type="checkbox"/> Transmit/receive	<input type="checkbox"/> Retrofit information
	<input type="checkbox"/> Product Safety	<input checked="" type="checkbox"/> Other ()	

This RTB has been issued to announce the firmware release information for the Language Install.

Version	Program No.	C. SUM	Effective Date
<i>0.69</i>	<i>B2471496A</i>	-	<i>November 2006 Production</i>
0.65	B2471496	A8E1	March 2006 Production

Version	Symptom Corrected
<i>0.69</i>	<i>Wording errors.</i>
0.65	1st Mass Production

Model: Martini-C3		Date: 21-Dec-06	No.: RB246006c
Subject: Firmware Release History (Network DocBox)		Prepared by: S. Watanabe	
From: 2nd Tech Support Sec. Service Support Dept.			
Classification:	<input type="checkbox"/> Troubleshooting <input type="checkbox"/> Mechanical <input type="checkbox"/> Paper path <input type="checkbox"/> Product Safety	<input type="checkbox"/> Part information <input type="checkbox"/> Electrical <input type="checkbox"/> Transmit/receive <input checked="" type="checkbox"/> Other ()	<input type="checkbox"/> Action required <input type="checkbox"/> Service manual revision <input type="checkbox"/> Retrofit information

This RTB has been issued to announce the firmware release information for the Network DocBox.

Version	Program No.	C. SUM	Effective Date
2.01	B8415530D	-	Nov 2006 production
1.14	B8415530C	-	June 2006 production
1.11.1	B8415530B	-	May 2006 Production
1.11	B8415530A	-	March 2006 Production

Version	Symptom Corrected
2.01	1. A fax option is now available.
1.14	1. Fixed: Jobs downloaded using DeskTopEditor For Production are not logged in the Job Log. 2. This happens only when the SSL setting on the device is disabled or if it is enabled and "Ciphertext/Clear Text" is permitted. 3. Fixed: Jobs cannot be output to Tray 7(the Bypass tray) via DeskTopBinder or DeskTopEditor For Production. 4. Fixed: Jobs downloaded using the DeskTopEditor for Production 'For Printing' function, can not be returned to the Document Server. 5. Fixed: Jobs stored using a Start Page number of more than 1000, cannot be printed via DeskTopBinder or DeskTopEditor For Production. The error message "Contains too many pages. Unable to process" will be displayed on the Client PC. 6. Fixed: The TWAIN error message shown when a user is using the Twain driver while another user is restoring the address book via SmartDeviceMonitor for Admin. - Before: 34992 Insufficient memory. Reduce the scanning area. - After: 36855 Scanner is in use for other function.
1.11.1	Some of the device settings specified using the SmartDeviceMonitor version2.0 Batch Configuration function, might not be applied to target devices.
1.11	1st Mass Production

Model: Martini-C3		Date: 21-Dec-06	No.: RB246007b
Subject: Firmware Release History (Web Support)		Prepared by: S. Watanabe	
From: 2nd Tech Support Sec. Service Support Dept.			
Classification:	<input type="checkbox"/> Troubleshooting	<input type="checkbox"/> Part information	<input type="checkbox"/> Action required
	<input type="checkbox"/> Mechanical	<input type="checkbox"/> Electrical	<input type="checkbox"/> Service manual revision
	<input type="checkbox"/> Paper path	<input type="checkbox"/> Transmit/receive	<input type="checkbox"/> Retrofit information
	<input type="checkbox"/> Product Safety	<input checked="" type="checkbox"/> Other ()	

This RTB has been issued to announce the firmware release information for the Web Support.

Version	Program No.	C. SUM	Effective Date
2.01	B8415540C	-	Nov 2006 production
1.02	B8415540B	-	June 2006 production
1.01	B8415540A	-	March 2006 Production

Version	Symptom Corrected
2.01	<ol style="list-style-type: none"> 1. Fixed: All accounts logged in with the same privileges when they log in the device via WebImageMonitor within about 1second. 2. Fixed: Errors in the way the French, Portuguese, and Danish for "Used Toner Bottle", are worded in Web Image Monitor. 3. Fixed: Trays containing B4 paper are shown to have B5 paper in the Chinese version of WIM. 4. Fixed: Unsupported paper sizes can be selected for the Bypass Tray using WIM. 5. Fixed: Support for the fax option has been added to WIM.
1.02	<ol style="list-style-type: none"> 1. Fixed: Attempting to configure an IPP Authentication password of 8 two-byte numeric digits, will cause the device's web service to stall. 2. Fixed: Some of the device settings specified using the WebSmartDeviceMonitor version2.0 Batch Configuration function, might not be applied to target devices. 3. Fixed: The Traditional Chinese wording for the tray size "8K" is wrong.
1.01	1st Mass Production

Model: Martini-C3		Date: 2-May-06	No.: RB246008
Subject: Firmware Release History (WebUapl)		Prepared by: S. Watanabe	
From: 2nd Tech Support Sec. Service Support Dept.			
Classification:	<input type="checkbox"/> Troubleshooting	<input type="checkbox"/> Part information	<input type="checkbox"/> Action required
	<input type="checkbox"/> Mechanical	<input type="checkbox"/> Electrical	<input type="checkbox"/> Service manual revision
	<input type="checkbox"/> Paper path	<input type="checkbox"/> Transmit/receive	<input type="checkbox"/> Retrofit information
	<input type="checkbox"/> Product Safety	<input checked="" type="checkbox"/> Other ()	

This RTB has been issued to announce the firmware release information for the Web Uapl.

Version	Program No.	C. SUM	Effective Date
1.10	B8415550A	-	March 2006 Production

Version	Symptom Corrected
1.10	1st Mass Production

Model: Martini-C3		Date: 16-Oct-06	No.: RB246009d
Subject: Firmware Release History (Printer)		Prepared by: S. Watanabe	
From: 2nd Tech Support Sec. Service Support Dept.			
Classification:	<input type="checkbox"/> Troubleshooting <input type="checkbox"/> Mechanical <input type="checkbox"/> Paper path <input type="checkbox"/> Product Safety	<input type="checkbox"/> Part information <input type="checkbox"/> Electrical <input type="checkbox"/> Transmit/receive <input checked="" type="checkbox"/> Other ()	<input type="checkbox"/> Action required <input type="checkbox"/> Service manual revision <input type="checkbox"/> Retrofit information

This RTB has been issued to announce the firmware release information for the Printer.

Version	Program No.	C. SUM	Effective Date
1.04	B8415521D		October 2006 Production
1.03	B8415521C	-	August 2006 Production
1.02	B8415521B	-	July 2006 Production
1.01	B8415521A	-	May 2006 Production
1.00	B8415521	-	March 2006 Production

Version	Symptom Corrected
1.04	<ol style="list-style-type: none"> 1. Fixed: HPGL syntax error (missing label terminator) will cause the device to stall. "Processing" will be displayed in the operation panel. 2. Fixed: The following reports are printed in a language other than Russian, even if Russian is selected as the primary system language. <ul style="list-style-type: none"> - Configuration Page - Menu List - Error Log* *Additionally, the title "File Name" in the Error Log will contain garbage characters.
1.03	Raster image performance improvement.
1.02	New SP mode added: Printer SP1300-1 (GBC Punch Enabled).
1.01	Fixed: The device might stall if it receives an RPCS job after another RPCS job was canceled by an authentication error.
1.00	1st Mass Production

Model: Martini-C3		Date: 21-Dec-06	No.: RB246010d
Subject: Firmware Release History (Scanner)		Prepared by: S. Watanabe	
From: 2nd Tech Support Sec. Service Support Dept.			
Classification:	<input type="checkbox"/> Troubleshooting <input type="checkbox"/> Mechanical <input type="checkbox"/> Paper path <input type="checkbox"/> Product Safety	<input type="checkbox"/> Part information <input type="checkbox"/> Electrical <input type="checkbox"/> Transmit/receive <input checked="" type="checkbox"/> Other ()	<input type="checkbox"/> Action required <input type="checkbox"/> Service manual revision <input type="checkbox"/> Retrofit information

This RTB has been issued to announce the firmware release information for the Printer.

Version	Program No.	C. SUM	Effective Date
m3_1.17	B8415510D	-	Nov 2006 Production
m3_1.16	B8415510C	-	July 2006 Production
m3_1.15	B8415510B	-	May 2006 Production
m3_1.14	B8415510A	-	March 2006 Production

Version	Symptom Corrected
m3_1.17	Fixed: The device or just the scanner application will stall when the device is awoken from sleep mode. This only affects devices that use an SNTP server.
m3_1.16	The machine cannot be turned off if "Clear Modes" is selected while the machine prepares the preview display.
m3_1.15	Fixed: Searching function can use by user code on the scanner and document server.
m3_1.14	1st Mass Production

Reissued:4-Jul-06

Model: Martini-C3	Date: 2-May-06	No.: RB246011a
-------------------	----------------	----------------

RTB Reissue

The items in bold italics have been corrected or added.

Subject: Firmware Release History (OpePanel)		Prepared by: S. Watanabe	
From: 2nd Tech Support Sec. Service Support Dept.			
Classification:	<input type="checkbox"/> Troubleshooting	<input type="checkbox"/> Part information	<input type="checkbox"/> Action required
	<input type="checkbox"/> Mechanical	<input type="checkbox"/> Electrical	<input type="checkbox"/> Service manual revision
	<input type="checkbox"/> Paper path	<input type="checkbox"/> Transmit/receive	<input type="checkbox"/> Retrofit information
	<input type="checkbox"/> Product Safety	<input checked="" type="checkbox"/> Other ()	

This RTB has been issued to announce the firmware release information for the Operation Panel.

ASI_TWN

Version	Program No.	C. SUM	Effective Date
<i>1.15.1</i>	<i>B2461490A</i>	-	<i>June 2006 Production</i>

CHN

Version	Program No.	C. SUM	Effective Date
<i>1.15</i>	<i>B2461491</i>	-	<i>June 2006 Production</i>

NA (USA)

Version	Program No.	C. SUM	Effective Date
1.13	B2471491	-	March 2006 Production

EU (Europe)

Version	Program No.	C. SUM	Effective Date
1.13	B2471492A	-	March 2006 Production

Version				Symptom Corrected
<i>ASI_TWN</i>	<i>CHN</i>	NA	EU	
<i>1.15.1</i>	<i>1.15</i>	1.13	1.13	<i>1st Mass Production</i>

Model: Martini-C3		Date: 2-May-06	No.: RB246012
Subject: Firmware Release History (Option PS3)		Prepared by: S. Watanabe	
From: 2nd Tech Support Sec. Service Support Dept.			
Classification:	<input type="checkbox"/> Troubleshooting	<input type="checkbox"/> Part information	<input type="checkbox"/> Action required
	<input type="checkbox"/> Mechanical	<input type="checkbox"/> Electrical	<input type="checkbox"/> Service manual revision
	<input type="checkbox"/> Paper path	<input type="checkbox"/> Transmit/receive	<input type="checkbox"/> Retrofit information
	<input type="checkbox"/> Product Safety	<input checked="" type="checkbox"/> Other ()	

This RTB has been issued to announce the firmware release information for the PS3 Option.

Version	Program No.	C. SUM	Effective Date
1.00	B5255121	-	March 2006 Production

Version	Symptom Corrected
1.00	1st Mass Production

Model: Martini-C3		Date: 14-Jul-06	No.: RB246002b
Subject: Firmware Release History (System)		Prepared by: S. Watanabe	
From: 2nd Tech Support Sec. Service Support Dept.			
Classification:	<input type="checkbox"/> Troubleshooting <input type="checkbox"/> Mechanical <input type="checkbox"/> Paper path <input type="checkbox"/> Product Safety	<input type="checkbox"/> Part information <input type="checkbox"/> Electrical <input type="checkbox"/> Transmit/receive <input checked="" type="checkbox"/> Other ()	<input type="checkbox"/> Action required <input type="checkbox"/> Service manual revision <input type="checkbox"/> Retrofit information

This RTB has been issued to announce the firmware release information for the System/Copy.

Version	Program No.	C. SUM	Effective Date
1.12	B2475101F	-	June 2006 Production
1.11	B2475101E	-	May 2006 Production
1.10	B2475101D	7974	March 2006 Production

Version	Symptom Corrected
1.12	<ol style="list-style-type: none"> 1. Symptom corrected: The alert message for fusing web Near End is not displayed. 2. Symptom corrected: Garbled characters are displayed in the paper settings screen when the Chinese display language is used. 3. Symptom corrected: Garbled characters are displayed in the email editing screen when the Taiwanese, Chinese or Korean display language is used. 4. Symptom corrected: SC672 occurs if the machine switches to Energy Saver Mode just after warming up. 5. Symptom corrected: The main machine prints but the sub machine does not print when using Copy Connection. 6. Symptom corrected: "WARNING..." is displayed when the system time does not match the RTC time. 7. Unnecessary lines at the trailing edge of the image are removed. 8. Added an Administrator counter for the MIB. <ol style="list-style-type: none"> 1. Fixed: Some numbers are displayed as garbage characters on the operation panels of Chinese/Taiwanese models. 2. Fixed: Scan to SMB destinations will not be added to the job if specified manually. This only happens if at least 1 SMB destination has already been entered and User Authentication is enabled. 3. Fixed: Removal of a Scan to SMB destination from a job (using the clear/stop button), might freeze the device or might display "SC997" on the operation panel. This only happens if more than 1 Scan to SMB destination has been specified for a Scan Job and User Authentication is enabled.

Model: Martini-C3	Date: 14-Jul-06	No.: RB246002b
-------------------	-----------------	----------------

Version	Symptom Corrected
	<p>4. Fixed: The device that has the 'Authentication: High Security' setting might not be able to authenticate a valid user on an LDAP server. This only occurs if the user name contains non-ASCII characters.</p> <p>This problem affects the following functions:</p> <ul style="list-style-type: none"> - LDAP Search - LDAP Connection Test - LDAP Authentication <p>5. Fixed: Either the scanner application or the entire device might stall if an LDAP search reference recursively spans 3 or more servers.</p> <p>6. Fixed: The device might lockup with "Scanning" displayed on the operation panel using Scan to Document Server.</p> <p>7. Fixed: Print settings of documents stored in the document server are lost if the document is downloaded using DeskTopEditor For Production and then returned to the document server.</p>
1.11	<p>1. Fixed: A preset job cannot be deleted.</p> <p>2. Fixed: The PS option might not start when the device powers up, if an SDK is installed on the same card as the PS option. As a result no functions that use the PS option will work properly (GFPR#ED06020001).</p> <p>3. UserCode has been removed as a search criteria for finding destinations in the address book for security reasons.</p> <p>Note: Removal of this search criteria requires both Controller firmware Ver 1.11 or later and Scanner firmware Ver Ver m_3.15 or later.</p>
1.10	1st Mass Production

Model: Martini-C3		Date: 8-Aug-06	No.: RB246013
Subject: Service Manual Revision		Prepared by: S. Watanabe	
From: 2nd Tech Support Sec. Service Support Dept.			
Classification:	<input type="checkbox"/> Troubleshooting	<input type="checkbox"/> Part information	<input type="checkbox"/> Action required
	<input type="checkbox"/> Mechanical	<input type="checkbox"/> Electrical	<input checked="" type="checkbox"/> Service manual revision
	<input type="checkbox"/> Paper path	<input type="checkbox"/> Transmit/receive	<input type="checkbox"/> Retrofit information
	<input type="checkbox"/> Product Safety	<input type="checkbox"/> Other ()	

The Service Manual was changed as follows. (The places highlighted in red were corrected).

P. 7-3

**Power Consumption
B246/B248/B249 Copier (120V Model)**

Item	B246		B248		B249	
	Basic	MFP	Basic	MFP	Basic	MFP
Copying	1.66/1.75KW	1.66/1.75KW	1.66/1.75KW	1.66/1.75KW	1.66/1.78KW	1.68/1.78KW
Warm-up	1.66/1.70KW	1.66/1.72KW	1.66/1.70KW	1.66/1.72KW	1.67/1.73KW	1.68/1.74KW
Standby	304/341 ^W	317/346 ^W	304/341 ^W	317/346 ^W	304/341 ^W	317/346 ^W
10 sec. Recovery	202/214 ^W	217/227 ^W	202/214 ^W	217/227 ^W	202/214 ^W	217/227 ^W
Off/Sleep Recovery	3.3/3.3 ^W	28.1/28.1 ^W	3.3/3.3 ^W	28.1/28.1 ^W	3.3/3.3 ^W	28.1/28.1 ^W
Energy Save Mode	3.3/3.3 ^W	28.1/28.1 ^W	3.3/3.3 ^W	28.1/28.1 ^W	3.3/3.3 ^W	28.1/28.1 ^W

B246/B248/B249 Copier (220V to 240V Model)

Item	B246 (Basic)	B248 (Basic)	B249 (Basic)
Copying	1.43/1.53 KW	1.44/1.56 KW	1.44/1.56 KW
Warm-up	1.77/1.81 KW	1.78/1.82 KW	1.78/1.83 KW
Standby	299/346 ^W	299/346 ^W	299/346 ^W
10 sec. Recovery	196/223 ^W	196/223 ^W	196/223 ^W
Off/Sleep Recovery	4.9/4.9 ^W	4.9/4.9 ^W	4.9/4.9 ^W
Energy Save Mode	4.9/4.9 ^W	4.9/4.9 ^W	4.9/4.9 ^W

Model: Martini-C3		Date: 11-Aug-06	No.: RB246002c
Subject: Firmware Release History (System)		Prepared by: S. Watanabe	
From: 2nd Tech Support Sec. Service Support Dept.			
Classification:	<input type="checkbox"/> Troubleshooting <input type="checkbox"/> Mechanical <input type="checkbox"/> Paper path <input type="checkbox"/> Product Safety	<input type="checkbox"/> Part information <input type="checkbox"/> Electrical <input type="checkbox"/> Transmit/receive <input checked="" type="checkbox"/> Other ()	<input type="checkbox"/> Action required <input type="checkbox"/> Service manual revision <input type="checkbox"/> Retrofit information

This RTB has been issued to announce the firmware release information for the System/Copy.

Version	Program No.	C. SUM	Effective Date
1.13	B2475101G	-	August 2006 Production
1.12	B2475101F	-	June 2006 Production
1.11	B2475101E	-	May 2006 Production
1.10	B2475101D	7974	March 2006 Production

Version	Symptom Corrected
1.13	<ol style="list-style-type: none"> 1. The machine cannot be turned off if "Clear Modes" is selected while the machine prepares the preview display. 2. SC672 occurs when the machine switches to Energy Saver Mode just after the main power is turned ON. 3. The SDK application might not be installed using WIM. 4. The device might stall if soon after a power cycle, a Java SDK application is accessed from Extended Feature Settings on the operation panel.
1.12	<ol style="list-style-type: none"> 1. Symptom corrected: The alert message for fusing web Near End is not displayed. 2. Symptom corrected: Garbled characters are displayed in the paper settings screen when the Chinese display language is used. 3. Symptom corrected: Garbled characters are displayed in the email editing screen when the Taiwanese, Chinese or Korean display language is used. 4. Symptom corrected: SC672 occurs if the machine switches to Energy Saver Mode just after warming up. 5. Symptom corrected: The main machine prints but the sub machine does not print when using Copy Connection. 6. Symptom corrected: "WARNING..." is displayed when the system time does not match the RTC time. 7. Unnecessary lines at the trailing edge of the image are removed. 8. Added an Administrator counter for the MIB. <p>1. Fixed: Some numbers are displayed as garbage characters on the operation panels of Chinese/Taiwanese models.</p>

Model: Martini-C3	Date: 11-Aug-06	No.: RB246002c
-------------------	-----------------	----------------

Version	Symptom Corrected
	<p>2. Fixed: Scan to SMB destinations will not be added to the job if specified manually. This only happens if at least 1 SMB destination has already been entered and User Authentication is enabled.</p> <p>3. Fixed: Removal of a Scan to SMB destination from a job (using the clear/stop button), might freeze the device or might be displayed "SC997" error message on the operation panel. This only happens is more than 1 Scan to SMB destination has been specified for a Scan Job and User Authentication is enabled.</p> <p>4. Fixed: The device that has the 'Autentication: High Security' setting might not be able to authenticate a valid user on an LDAP server. This only occurs if the user name contains non-ASCII characters.</p> <p>This problem effects the following functions:</p> <ul style="list-style-type: none"> - LDAP Search - LDAP Connection Test - LDAP Authentication <p>5. Fixed: Either the scanner application or the entire device might stall if an LDAP search reference, recursively spans 3 or more servers.</p> <p>6. Fixed: The device might lockup with "Scanning" displayed on the operation panel using Scan to Document Server.</p> <p>7. Fixed: Print settings of documents stored in the document server are lost if the document is downloaded using DeskTopEditor For Production and then returned to the document server.</p>
1.11	<p>1. Fixed: Searching function can use by user code on the scanner and document server.</p> <p>2. Fixed: A preset job cannot be deleted.</p>
1.10	1st Mass Production

Reissued:11-Aug-06

Model: Martini-C3	Date: 2-May-06	No.: RB246011b
-------------------	----------------	----------------

RTB Reissue

The items in bold italics have been corrected or added.

Subject: Firmware Release History (OpePanel)		Prepared by: S. Watanabe	
From: 2nd Tech Support Sec. Service Support Dept.			
Classification:	<input type="checkbox"/> Troubleshooting	<input type="checkbox"/> Part information	<input type="checkbox"/> Action required
	<input type="checkbox"/> Mechanical	<input type="checkbox"/> Electrical	<input type="checkbox"/> Service manual revision
	<input type="checkbox"/> Paper path	<input type="checkbox"/> Transmit/receive	<input type="checkbox"/> Retrofit information
	<input type="checkbox"/> Product Safety	<input checked="" type="checkbox"/> Other ()	

This RTB has been issued to announce the firmware release information for the Operation Panel.

Korea

Version	Program No.	C. SUM	Effective Date
<i>1.18</i>	<i>B2461492A</i>	-	<i>August 2006 Production</i>

ASI_TWN

Version	Program No.	C. SUM	Effective Date
1.15.1	B2461490A	-	June 2006 Production

CHN

Version	Program No.	C. SUM	Effective Date
1.15	B2461491	-	June 2006 Production

NA (USA)

Version	Program No.	C. SUM	Effective Date
1.13	B2471491	-	March 2006 Production

EU (Europe)

Version	Program No.	C. SUM	Effective Date
1.13	B2471492A	-	March 2006 Production

Reissued:11-Aug-06

Model: Martini-C3					Date: 2-May-06	No.: RB246011b
Version					Symptom Corrected	
<i>Korea</i>	<i>ASI_TWN</i>	<i>CHN</i>	<i>NA</i>	<i>EU</i>		
<i>1.18</i>	-	-	-	-	<i>1st Mass Production for Korea.</i>	
-	1.15.1	1.15	1.13	1.13	1st Mass Production	

Model: Martini-C3		Date: 01-Sep-06	No.: RB246002d
Subject: Firmware Release History (Sysyem)		Prepared by: S. Watanabe	
From: 2nd Tech Support Sec. Service Support Dept.			
Classification:	<input type="checkbox"/> Troubleshooting	<input type="checkbox"/> Part information	<input type="checkbox"/> Action required
	<input type="checkbox"/> Mechanical	<input type="checkbox"/> Electrical	<input type="checkbox"/> Service manual revision
	<input type="checkbox"/> Paper path	<input type="checkbox"/> Transmit/receive	<input type="checkbox"/> Retrofit information
	<input type="checkbox"/> Product Safety	<input checked="" type="checkbox"/> Other ()	

This RTB has been issued to announce the firmware release information for the System/Copy.

Version	Program No.	C. SUM	Effective Date
1.14.1	B2475101H	-	August 2006 Production
1.13	B2475101G	-	August 2006 Production
1.12	B2475101F	-	June 2006 Production
1.11	B2475101E	-	May 2006 Production
1.10	B2475101D	7974	March 2006 Production

Version	Symptom Corrected
1.14.1	<ol style="list-style-type: none"> 1. SC632 (MF coin/card-operated device error) occurs when the MK-1 is connected 2. The bottom row of characters is not displayed in the remote firmware update screen (German, Portuguese). 3. SC990 occurs when the SMC is printed out 4. The prints of a Staple job are not shifted when the finisher (B700/701) is connected. 5. During Copy Connection, some images from the previous job are printed out by the sub machine. 6. SC990 occurs while the SMC is being printed out. 7. A new SP "SP5-401-103 (Default Document ACL)" has been added. This SP can be used to assign the default access privileges of users to their own documents on the Document Server. <p>SP5-401-103 "Default Document ACL" 0: Read only (default) 1: Edit 2: Edit/delete 3: Full control</p> <p>Note 1: This is only available using Windows/LDAP/Integration Server Authentication. Note 2: This default will only apply to new users. It will not affect existing users.</p>
1.13	<ol style="list-style-type: none"> 1. The machine cannot be turned off if "Clear Modes" is selected while the machine prepares the preview display.

Model: Martini-C3	Date: 01-Sep-06	No.: RB246002d
-------------------	-----------------	----------------

Version	Symptom Corrected
	<ol style="list-style-type: none"> 2. SC672 occurs when the machine switches to Energy Saver Mode just after the main power is turned ON. 3. The SDK application might not be installed using WIM. 4. The device might stall if soon after a power cycle, a Java SDK application is accessed from Extended Feature Settings on the operation panel.
1.12	<ol style="list-style-type: none"> 1. Symptom corrected: The alert message for fusing web Near End is not displayed. 2. Symptom corrected: Garbled characters are displayed in the paper settings screen when the Chinese display language is used. 3. Symptom corrected: Garbled characters are displayed in the email editing screen when the Taiwanese, Chinese or Korean display language is used. 4. Symptom corrected: SC672 occurs if the machine switches to Energy Saver Mode just after warming up. 5. Symptom corrected: The main machine prints but the sub machine does not print when using Copy Connection. 6. Symptom corrected: "WARNING..." is displayed when the system time does not match the RTC time. 7. Unnecessary lines at the trailing edge of the image are removed. 8. Added an Administrator counter for the MIB. <ol style="list-style-type: none"> 1. Fixed: Some numbers are displayed as garbage characters on the operation panels of Chinese/Taiwanese models. 2. Fixed: Scan to SMB destinations will not be added to the job if specified manually. This only happens if at least 1 SMB destination has already been entered and User Authentication is enabled. 3. Fixed: Removal of a Scan to SMB destination from a job (using the clear/stop button), might freeze the device or might be displayed "SC997" error message on the operation panel. This only happens is more than 1 Scan to SMB destination has been specified for a Scan Job and User Authentication is enabled. 4. Fixed: The device that has the 'Autentication: High Security' setting might not be able to authenticate a valid user on an LDAP server. This only occurs if the user name contains non-ASCII characters. This problem effects the following functions: <ul style="list-style-type: none"> - LDAP Search - LDAP Connection Test - LDAP Authentication 5. Fixed: Either the scanner application or the entire device might stall if an LDAP search reference, recursively spans 3 or more servers. 6. Fixed: The device might lockup with "Scanning" displayed on the operation panel using Scan to Document Server. 7. Fixed: Print settings of documents stored in the document server are lost if the document is downloaded using DeskTopEditor For Production and then returned to the document server.

Model: Martini-C3		Date: 01-Sep-06	No.: RB246002d
Version	Symptom Corrected		
1.11	1. Fixed: Searching function can use by user code on the scanner and document server. 2. Fixed: A preset job cannot be deleted.		
1.10	1st Mass Production		

Model: Martini-C3		Date: 14-Sep-06	No.: RB246014
Subject: Firmware information for Plockmatic/GBC		Prepared by: S. Watanabe	
From: 2nd Tech Support Sec. Service Support Dept.			
Classification:	<input type="checkbox"/> Troubleshooting	<input type="checkbox"/> Part information	<input type="checkbox"/> Action required
	<input type="checkbox"/> Mechanical	<input type="checkbox"/> Electrical	<input type="checkbox"/> Service manual revision
	<input type="checkbox"/> Paper path	<input type="checkbox"/> Transmit/receive	<input type="checkbox"/> Retrofit information
	<input type="checkbox"/> Product Safety	<input checked="" type="checkbox"/> Other ()	

Requirements and Limitations for using the Plockmatic BK5010 or GBC Stream Punch SPIII with Model MT-C3

Requirements

To use the Plockmatic BK5010 or GBC Stream Punch SPIII with the MT-C3, install the following:

1. System firmware **B2475101H or newer**
2. Engine firmware **B2475127C or newer**
3. Printer firmware **B8415521C or newer** (if the customer uses the Printer function)
4. Finisher SR842

Note: The BK5010 or GBC SPIII can be used with the MT-C3 from September 2006.

Limitations

There are two limitations to using these options on the MT-C3.

1. There is no error message displayed on the MT-C3 in the following cases:
 - A jam occurs in the BK5010
 - The cover of the BK5010 is open

Note: This is because of the specifications of the I/F on the BK5010.

Action: Please advise the customer of this limitation.

2. The "BK-201" jam error message is displayed on the BK5010 operation panel in the following cases:
 - The MT-C3 main power is turned ON when the BK5010 is in the Ready condition
 - The MT-C3 recovers from Sleep Mode

Action: Please advise the customer of this limitation and ask them to clear the error by opening/closing any door on the BK5010.

Reissued:06-Dec-06

Model: Martini-C3	Date: 2-May-06	No.: RB246011c
-------------------	----------------	----------------

RTB Reissue

The items in bold italics have been corrected or added.

Subject: Firmware Release History (OpePanel)		Prepared by: S. Watanabe	
From: 2nd Tech Support Sec. Service Support Dept.			
Classification:	<input type="checkbox"/> Troubleshooting	<input type="checkbox"/> Part information	<input type="checkbox"/> Action required
	<input type="checkbox"/> Mechanical	<input type="checkbox"/> Electrical	<input type="checkbox"/> Service manual revision
	<input type="checkbox"/> Paper path	<input type="checkbox"/> Transmit/receive	<input type="checkbox"/> Retrofit information
	<input type="checkbox"/> Product Safety	<input checked="" type="checkbox"/> Other ()	

This RTB has been issued to announce the firmware release information for the Operation Panel.

Korea

Version	Program No.	C. SUM	Effective Date
1.18	B2461492A	-	August 2006 Production

ASI_TWN

Version	Program No.	C. SUM	Effective Date
1.19	B2461490B	-	November 2006 production
1.15.1	B2461490A	-	June 2006 Production

CHN

Version	Program No.	C. SUM	Effective Date
1.15	B2461491	-	June 2006 Production

NA (USA)

Version	Program No.	C. SUM	Effective Date
1.19	B2471491A	-	November 2006 production
1.13	B2471491	-	March 2006 Production

EU (Europe)

Version	Program No.	C. SUM	Effective Date
1.19	B2471492B	-	November 2006 production
1.13	B2471492A	-	March 2006 Production

Reissued:06-Dec-06

Model: Martini-C3	Date: 2-May-06	No.: RB246011c
-------------------	----------------	----------------

Version					Symptom Corrected
Korea	ASI_TWN	CHN	NA	EU	
-	1.19	-	1.19	1.19	<i>The function key assignment on the operation panel has been changed due to the fax option. (The Registered program key has been changed to the Facsimile key.)</i>
1.18	-	-	-	-	<i>1st Mass Production for Korea.</i>
-	1.15.1	1.15	1.13	1.13	1st Mass Production

Model: Martini-C3		Date: 05-Dec-06	No.: RB246002e
Subject: Firmware Release History (Sysyem)		Prepared by: S. Watanabe	
From: 2nd Tech Support Sec. Service Support Dept.			
Classification:	<input type="checkbox"/> Troubleshooting <input type="checkbox"/> Mechanical <input type="checkbox"/> Paper path <input type="checkbox"/> Product Safety	<input type="checkbox"/> Part information <input type="checkbox"/> Electrical <input type="checkbox"/> Transmit/receive <input checked="" type="checkbox"/> Other ()	<input type="checkbox"/> Action required <input type="checkbox"/> Service manual revision <input type="checkbox"/> Retrofit information

This RTB has been issued to announce the firmware release information for the System/Copy.

Version	Program No.	C. SUM	Effective Date
2.04	B2475101J	-	November 2006 Production
1.14.1	B2475101H	-	August 2006 Production
1.13	B2475101G	-	August 2006 Production
1.12	B2475101F	-	June 2006 Production
1.11	B2475101E	-	May 2006 Production
1.10	B2475101D	7974	March 2006 Production

Version	Symptom Corrected
2.04	<ol style="list-style-type: none"> 1. SC819 occurs if the power is turned OFF and ON during a remote firmware update (RFU). 2. Supports the Fax and G3 options. 3. Fax does not start after resetting the controller. 4. 2-byte fonts in the Key Display name will be displayed as garbage characters. This problem happens in the confirmation screen that is shown when a user is removed from "Protect Destination" or "Protect File(s)". 5. Pixels of images might be swapped due to a byte ordering problem. This only happens toward the end of PCL or PS jobs with a lot of pages.
1.14.1	<ol style="list-style-type: none"> 1. SC632 (MF coin/card-operated device error) occurs when the MK-1 is connected 2. The bottom row of characters is not displayed in the remote firmware update screen (German, Portuguese). 3. SC990 occurs when the SMC is printed out 4. The prints of a Staple job are not shifted when the finisher(B700/701) are connected. 5. During Copy Connection, some images from the previous job are printed out by the sub machine. 6. SC990 occurs while the SMC is being printed out. 7. A new SP "SP5-401-103 ("Default Document ACL")" has been added. This SP can be used to assign the default access privileges of users to their own documents on the Document Server.

Model: Martini-C3	Date: 05-Dec-06	No.: RB246002e
-------------------	-----------------	----------------

Version	Symptom Corrected
	<p>SP5-401-103 "Default Document ACL"</p> <p>0: Read only (default) 1: Edit 2: Edit/delete 3: Full control</p> <p>Note1: This is only available using Windows/LDAP/Integration Server Authentication. Note2: This default will only apply to new users. It will not affect existing users.</p>
1.13	<ol style="list-style-type: none"> 1. The machine cannot be turned off if "Clear Modes" is selected while the machine prepares the preview display. 2. SC672 occurs when the machine switches to Energy Saver Mode just after the main power is turned ON. 3. The SDK application might not be installed using WIM. 4. The device might stall if soon after a power cycle, a Java SDK application is accessed from Extended Feature Settings on the operation panel.
1.12	<ol style="list-style-type: none"> 1. Symptom corrected: The alert message for fusing web Near End is not displayed. 2. Symptom corrected: Garbled characters are displayed in the paper settings screen when the Chinese display language is used. 3. Symptom corrected: Garbled characters are displayed in the email editing screen when the Taiwanese, Chinese or Korean display language is used. 4. Symptom corrected: SC672 occurs if the machine switches to Energy Saver Mode just after warming up. 5. Symptom corrected: The main machine prints but the sub machine does not print when using Copy Connection. 6. Symptom corrected: "WARNING..." is displayed when the system time does not match the RTC time. 7. Unnecessary lines at the trailing edge of the image are removed. 8. Added an Administrator counter for the MIB. <ol style="list-style-type: none"> 1. Fixed: Some numbers are displayed as garbage characters on the operation panels of Chinese/Taiwanese models. 2. Fixed: Scan to SMB destinations will not be added to the job if specified manually. This only happens if at least 1 SMB destination has already been entered and User Authentication is enabled. 3. Fixed: Removal of a Scan to SMB destination from a job (using the clear/stop button), might freeze the device or might be displayed "SC997" error message on the operation panel. This only happens is more than 1 Scan to SMB destination has been specified for a Scan Job and User Authentication is enabled. 4. Fixed: The device that has the 'Autentication: High Security' setting might not be able to authenticate a valid user on an LDAP server. This only occurs if the user name contains non-ASCII characters.

Model: Martini-C3	Date: 05-Dec-06	No.: RB246002e
-------------------	-----------------	----------------

Version	Symptom Corrected
	<p>This problem effects the following functions:</p> <ul style="list-style-type: none"> - LDAP Search - LDAP Connection Test - LDAP Authentication <p>5. Fixed: Either the scanner application or the entire device might stall if an LDAP search reference, recursively spans 3 or more servers.</p> <p>6. Fixed: The device might lockup with "Scanning" displayed on the operation panel using Scan to Document Server.</p> <p>7. Fixed: Print settings of documents stored in the document server are lost if the document is downloaded using DeskTopEditor For Production and then returned to the document server.</p>
1.11	<p>1. Fixed: Searching function can use by user code on the scanner and document server.</p> <p>2. Fixed: A preset job cannot be deleted.</p>
1.10	1st Mass Production

Model: Martini-C3		Date: 11-Dec-06	No.: RB246009e
Subject: Firmware Release History (Printer)		Prepared by: S. Watanabe	
From: 2nd Tech Support Sec. Service Support Dept.			
Classification:	<input type="checkbox"/> Troubleshooting <input type="checkbox"/> Mechanical <input type="checkbox"/> Paper path <input type="checkbox"/> Product Safety	<input type="checkbox"/> Part information <input type="checkbox"/> Electrical <input type="checkbox"/> Transmit/receive <input checked="" type="checkbox"/> Other ()	<input type="checkbox"/> Action required <input type="checkbox"/> Service manual revision <input type="checkbox"/> Retrofit information

This RTB has been issued to announce the firmware release information for the Printer.

Version	Program No.	C. SUM	Effective Date
1.05	B8415521E	-	January 2007 Production
1.04	B8415521D	-	October 2006 Production
1.03	B8415521C	-	August 2006 Production
1.02	B8415521B	-	July 2006 Production
1.01	B8415521A	-	May 2006 Production
1.00	B8415521	-	March 2006 Production

Version	Symptom Corrected
1.05	<p><i>The device supports Unicode v3.0 fonts. Unicode v3.0 fonts for Japanese/Korean/Traditional Chinese/Simplified Chinese are only available with the Unicode Font Package for SAP.</i></p> <p>Symptom corrected:</p> <ol style="list-style-type: none"> <i>PCL data might be printed as garbage characters after several hundred pages of PCL data are printed without a power-off. (Techmail#TS060753) .</i> <i>PCL jobs that include separator pages might be printed as garbage characters (FPR#RC06040009/RC0610007).</i> <i>After selecting a file in the Print Jobs menu in the operation panel, all of the following buttons might remain grayed out.</i> <ul style="list-style-type: none"> - "Print" - "Delete" - "Select All Jobs" - "Clear All" - "Unlock File" (File Administrator privileges required) - "Change Password"
1.04	<ol style="list-style-type: none"> Fixed: HPGL syntax error (missing label terminator) will cause the device to stall. "Processing" will be displayed in the operation panel. Fixed: The following reports are printed in a language other than Russian, even if Russian is selected as the primary system language. <ul style="list-style-type: none"> - Configuration Page - Menu List - Error Log* *Additionally, the title "File Name" in the Error Log will contain garbage characters.
1.03	Raster image performance improvement.

Model: Martini-C3	Date: 11-Dec-06	No.: RB246009e
-------------------	-----------------	----------------

Version	Symptom Corrected
1.02	New SP mode added: Printer SP1300-1 (GBC Punch Enabled).
1.01	Fixed: The device might stall if it receives an RPCS job after another RPCS job was canceled by an authentication error.
1.00	1st Mass Production

Model: Martini-C3		Date: 4-Dec-06	No.: RB246015
Subject: MT-C3 Fax Options		Prepared by: S. Watanabe	
From: 2nd Tech Support Sec. Service Support Dept.			
Classification:	<input type="checkbox"/> Troubleshooting	<input type="checkbox"/> Part information	<input type="checkbox"/> Action required
	<input type="checkbox"/> Mechanical	<input type="checkbox"/> Electrical	<input type="checkbox"/> Service manual revision
	<input type="checkbox"/> Paper path	<input type="checkbox"/> Transmit/receive	<input type="checkbox"/> Retrofit information
	<input type="checkbox"/> Product Safety	<input checked="" type="checkbox"/> Other ()	

This RTB contains the installation procedure for the Fax Option Type 7500 (B819) and the G3 Interface Unit Type 7500 (B820). These options will be released in December 2006 for the NA, EU and Asia models.

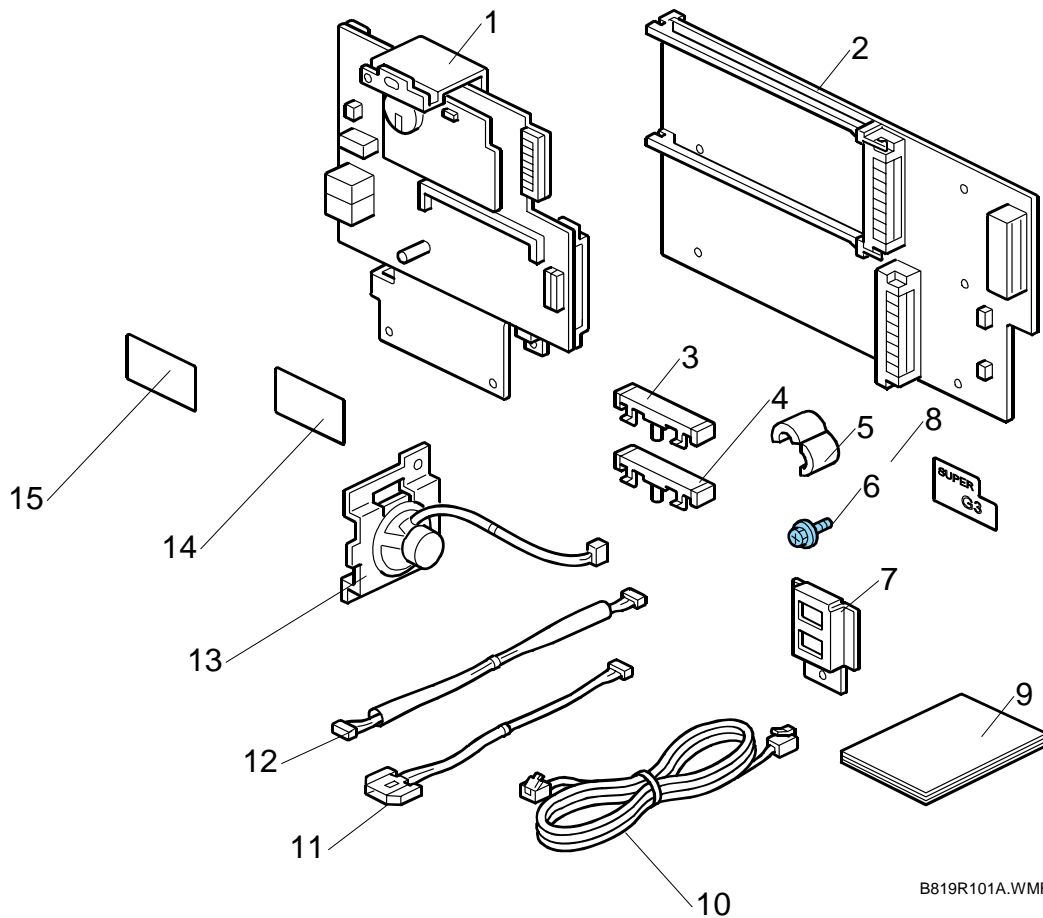
Model: Martini-C3	Date: 4-Dec-06	No.: RB246015
-------------------	----------------	---------------

Fax Option Type 7500 (B819)

Component Check

Check the quantity and condition of the components against the following list.

No.	Description	Q'ty
1.	FCU	1
2.	Interface Board	1
3.	Keytop (NA)	1
4.	Keytops (Symbol)	1
5.	Ferrite Core	1
6.	Screws (Blue M3 x 6)	9
7.	Fax Connector Bracket	1
8.	Super G3 Decal	1
9.	Instructions	1
10.	Telephone Cable (NA only)	1
11.	FCU Power Harness	1
12.	FCU Power Relay Harness (insulated)	1
13.	Speaker	1
14.	FCC Decal (NA Only)	1
15.	Serial Number Decal	1

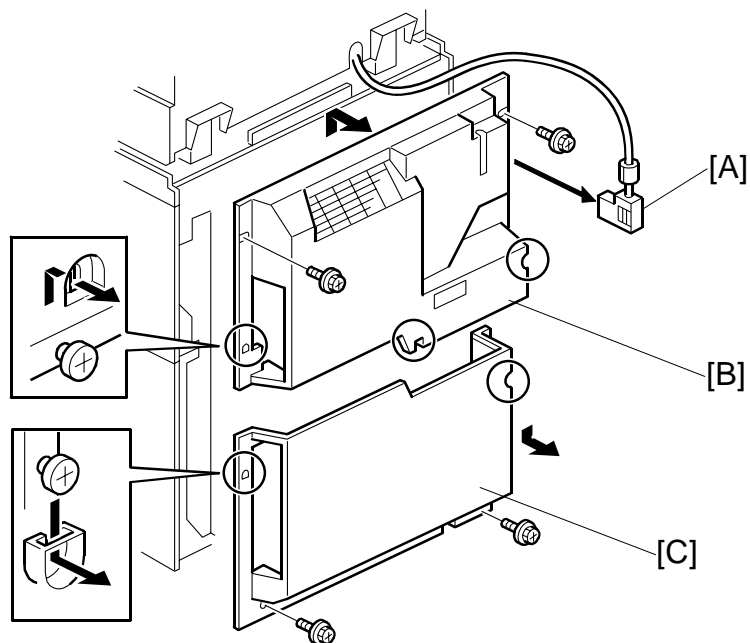


Model: Martini-C3	Date: 4-Dec-06	No.: RB246015
-------------------	----------------	---------------

Installation Procedure

FCU installation

<p>⚠ CAUTION</p> <p>Before installing this fax unit:</p> <ol style="list-style-type: none"> 1) Print out all data in the printer buffer. 2) Turn off the main power switch and disconnect the power cord and the network cable.



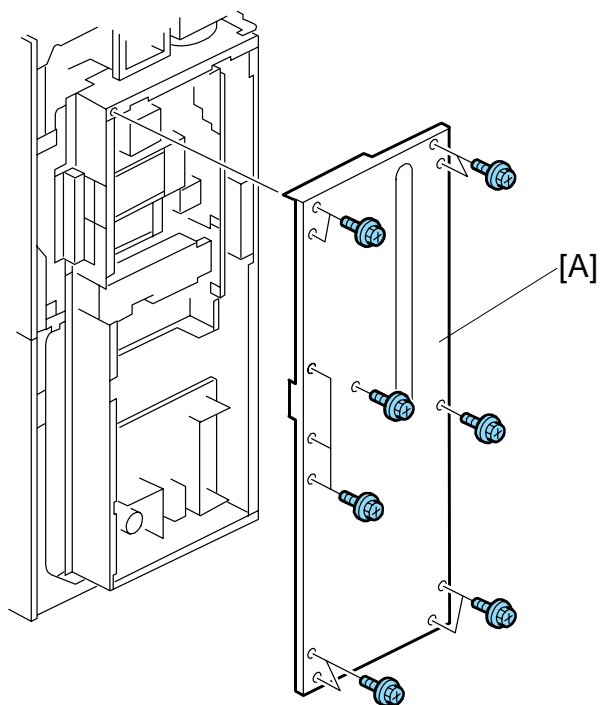
B819R102.WMF

1. Disconnect the ADF connector [A].
2. Remove the rear upper cover [B] (⌀ x 2)
 - Slide down to remove.
 - When re-attaching, before tightening the screws make sure that the tabs on the cover are engaged with the shoulder screws.
3. Remove the rear lower cover [C] (⌀ x 2)
 - When re-attaching, before tightening the screws make sure that the tabs on the cover are engaged with the shoulder screws.

Model: Martini-C3

Date: 4-Dec-06

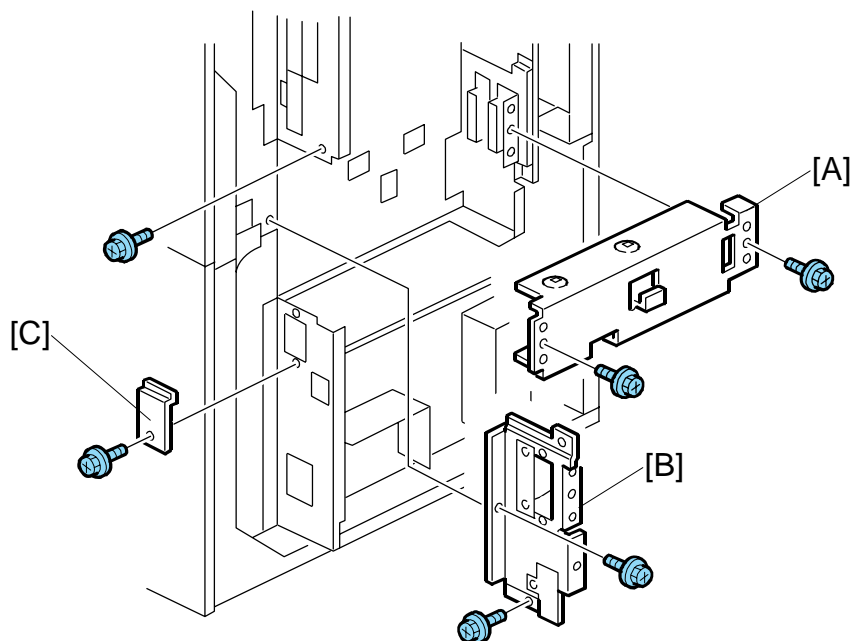
No.: RB246015



B819R103.WMF

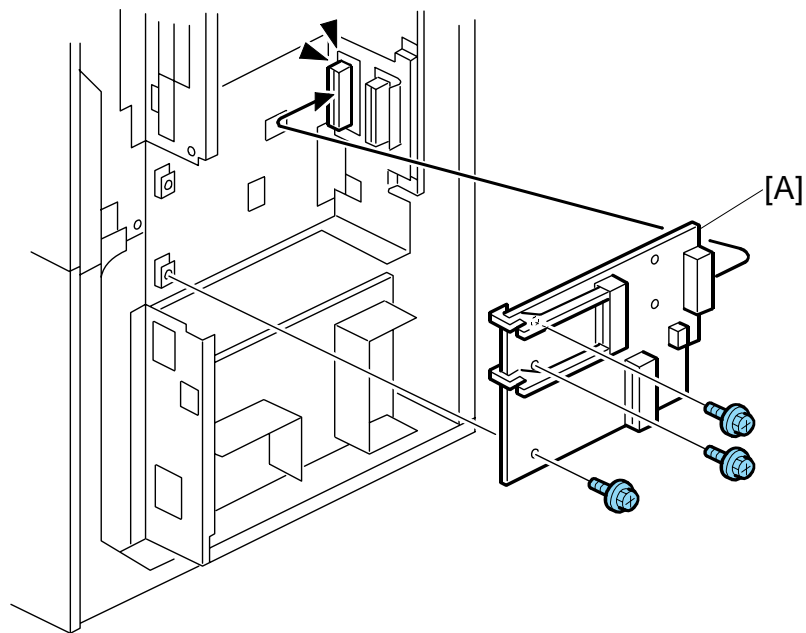
4. Remove the controller box cover [A] (⌀ x13).

Model: Martini-C3	Date: 4-Dec-06	No.: RB246015
-------------------	----------------	---------------



B819R104A.WMF

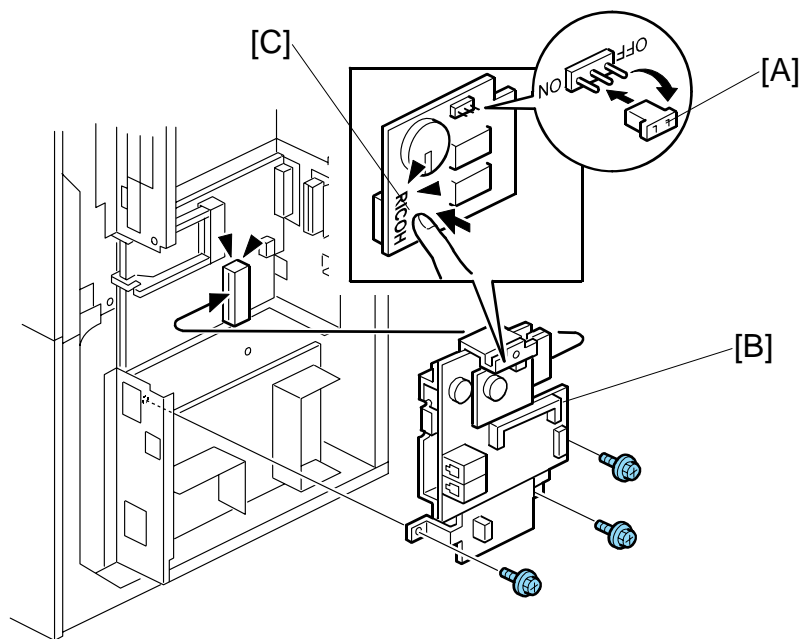
5. Remove the option board cover [A] (⚙️ x2).
6. Remove the option faceplate [B] (⚙️ x3).
7. Remove the cover plate [C] (⚙️ x1).



B819R105.WMF

8. Attach the interface board [A] (x3).

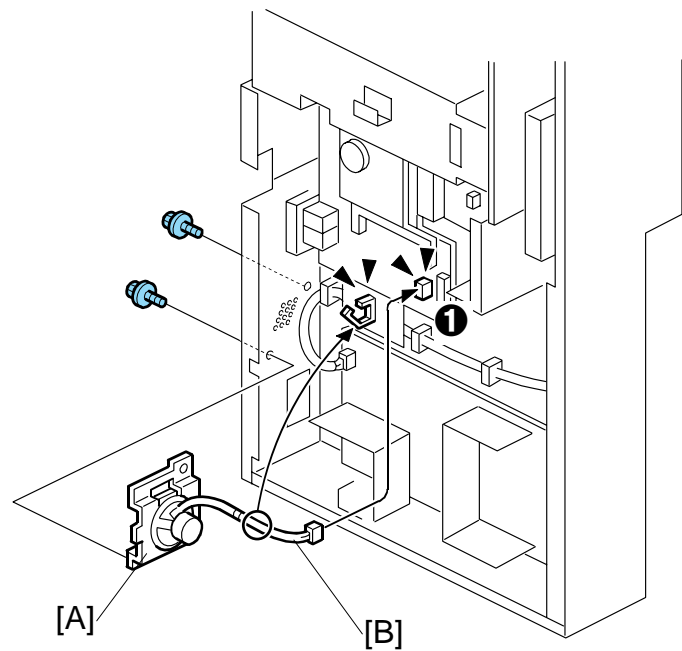
Model: Martini-C3	Date: 4-Dec-06	No.: RB246015
-------------------	----------------	---------------



B819R106.WMF

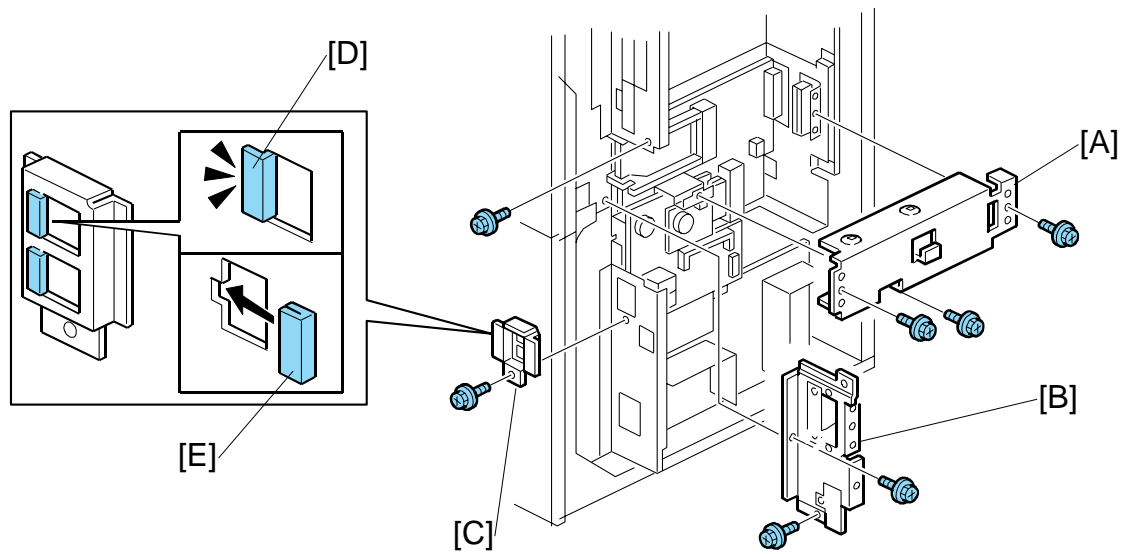
9. Remove the jumper [A] on the MBU and set it to the ON position.
Important: If the jumper remains at the OFF position, this will cause SC672 (Controller Startup Error) to appear.
10. Attach the FCU [B] to the interface board (⚙ x4).
11. Press on the "RICOH" logo at [C] to make sure that the MBU is securely mounted on the FCU.

Model: Martini-C3	Date: 4-Dec-06	No.: RB246015
-------------------	----------------	---------------



12. Attach the speaker [A] to the side of the controller box (🔩 x2).
13. Connect the speaker harness [B] to **CN605 1** on the FCU (🔌 x1, ⏪ x2).

Model: Martini-C3	Date: 4-Dec-06	No.: RB246015
-------------------	----------------	---------------



B819R108A.WMF

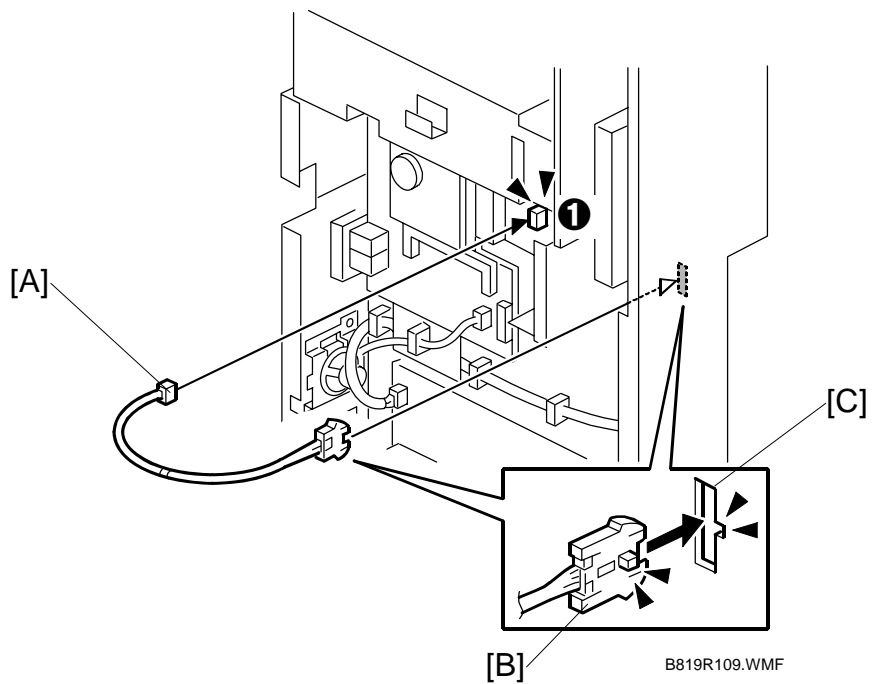
14. Reattach the option board cover [A] removed in Step 5 (⌀ x2).

15. Reattach the option faceplate [B] removed in Step 6 (⌀ x3).

16. Attach the fax connector bracket [C] (⌀ x1).

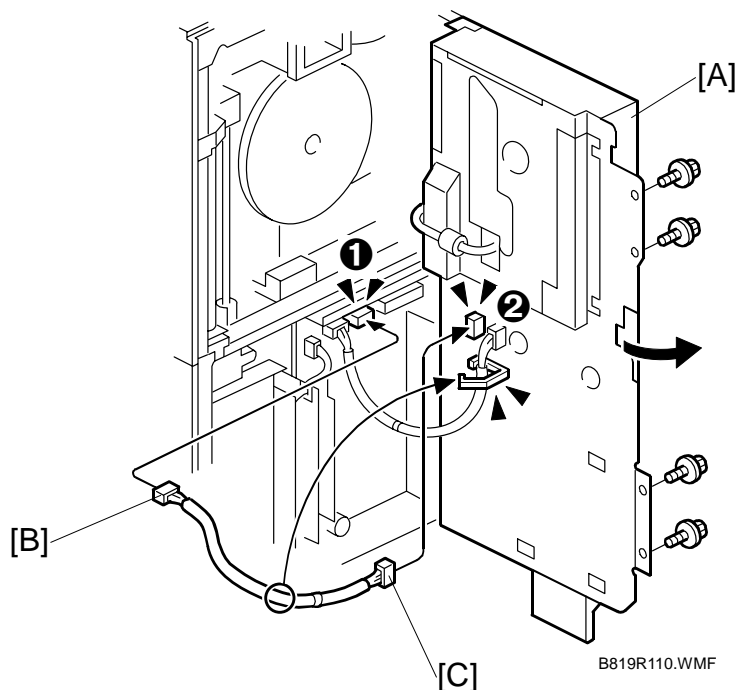
NOTE: Make sure that the protective sleeves [D] and [E] are attached properly.

Model: Martini-C3	Date: 4-Dec-06	No.: RB246015
-------------------	----------------	---------------

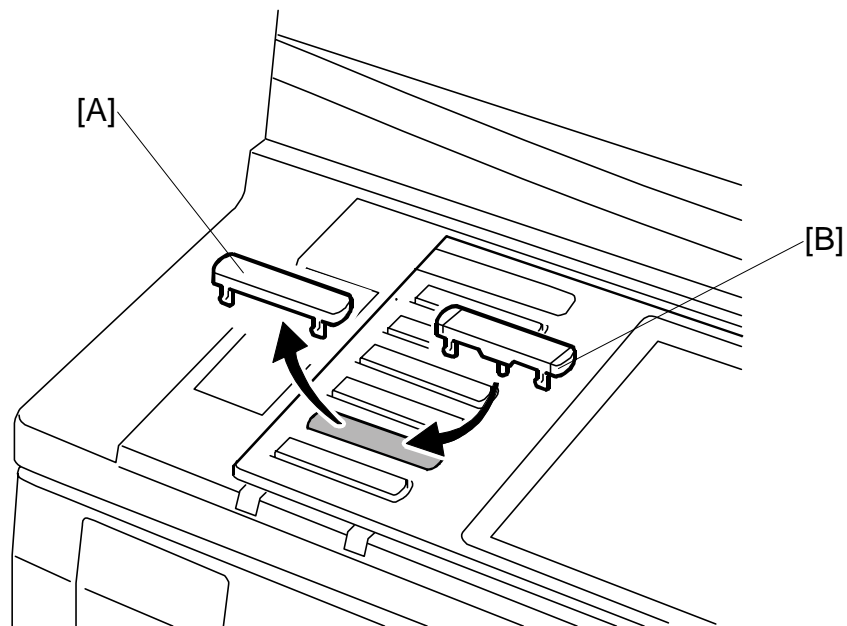


17. Connect the small end of the FCU power harness [A] to **CN323 ①**.
18. Set the large end of the harness [B] into the vertical cutout [C].

Model: Martini-C3	Date: 4-Dec-06	No.: RB246015
-------------------	----------------	---------------



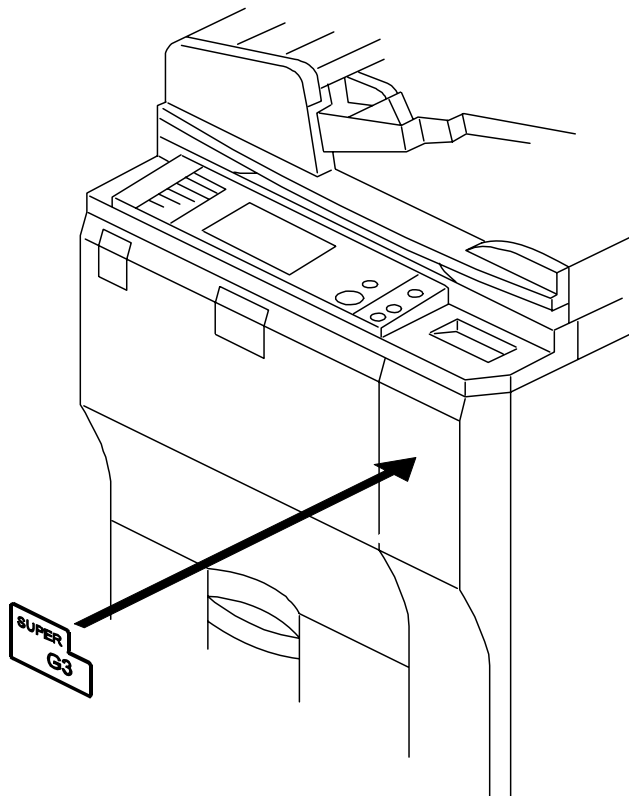
19. Remove the screws of the controller box [A] then open it (🔧 x4).
20. Connect one end of the FCU power relay harness [B] to **CN121** on the PSU ❶ (🔌 x1).
21. Connect the other end of the FCU power relay harness [C] to the harness connector set in the vertical cutout at ❷ (the connector that was set in Step 18) (🔌 x1, ⏪ x1).



B819R111A.WMF

22. Remove the blank keytop [A] (5th from the top) and replace it with one of the keytops provided [B] (either the "Facsimile" keytop or the fax symbol keytop).

Model: Martini-C3	Date: 4-Dec-06	No.: RB246015
-------------------	----------------	---------------

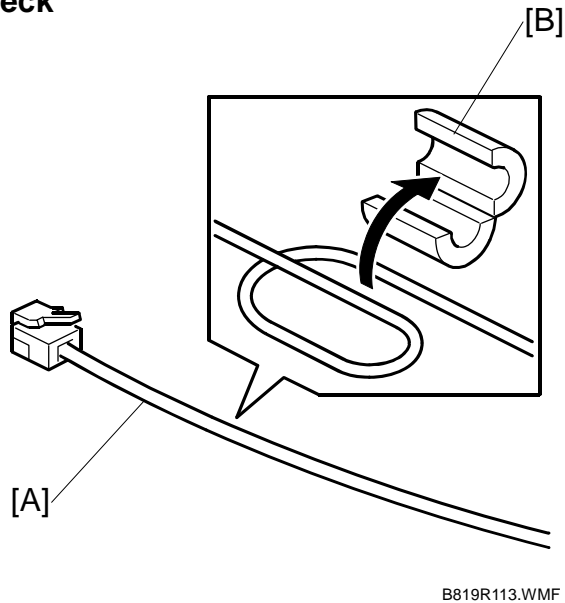


B819R112A.WMF

- 23. Attach the "Super G3" decal to the front door.
 - 24. Attach the FCC and serial number decals to the rear cover of the machine..
- NOTE:** The FCC decal is for the U.S. and Canada only.

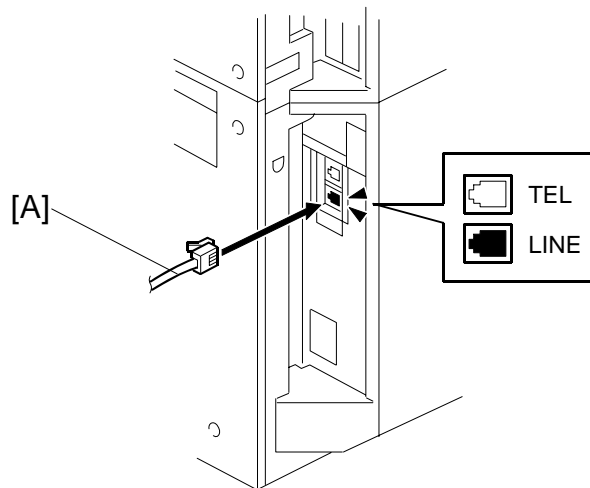
Model: Martini-C3	Date: 4-Dec-06	No.: RB246015
-------------------	----------------	---------------

Line Connection and Check



B819R113.WMF

1. Loop one end of the telephone cable [A] once, then enclose it with the ferrite core [B] as shown.
NOTE: Attach the ferrite core at least 9 cm (3.5 in.) from the connector.



B819R114.WMF

2. Insert the end of the telephone cable [A] with the ferrite core into the "LINE" RJ-45 connector.
3. Reattach all covers and the ADF cable.

Model: Martini-C3

Date: 4-Dec-06

No.: RB246015

4. Connect the machine power cord to the power supply, then turn on the main power switch.
5. Go into the SP mode and confirm that the fax SP codes are enabled.
 - Push [Reset], enter "107", then hold down "Clear/Reset" for at least 3 sec.
 - At the initial screen, confirm that "Fax SP" is displayed. This indicates that the machine recognizes the fax unit.
6. Confirm that the date and time setting are correct.
Push [User Tools] then touch "System Settings"> "Timer Settings"> "Set Date" and "Set Time".

Model: Martini-C3	Date: 4-Dec-06	No.: RB246015
-------------------	----------------	---------------

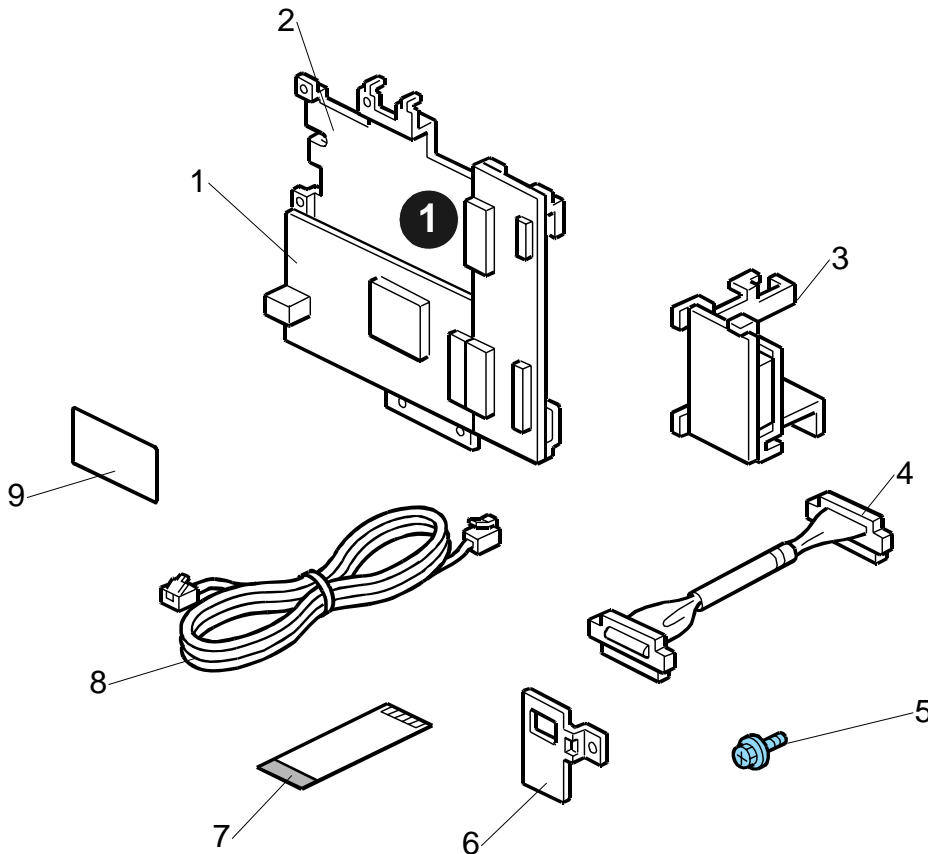
G3 Interface Unit Type 7500 (B820)

Component check

Check the quantity and condition of the components against the following list.

No.	Description	Q'ty
1.	G3 Interface Board (attached)	
2.	G3 Interface Unit* ¹	1
3.	CCU Drive Board	1
4.	CCUIF Harness	1
5.	Screws (Blue M3 x 6)	5
6.	G3 Connector Bracket	1
7.	FFC (Flat Film Connector)	1
8.	Telephone Cable (NA Only)	1
9.	FCC Decal (NA Only)	1

*1 One additional G3 interface unit (ordered separately) can be mounted in the open slot of the G3 interface board.

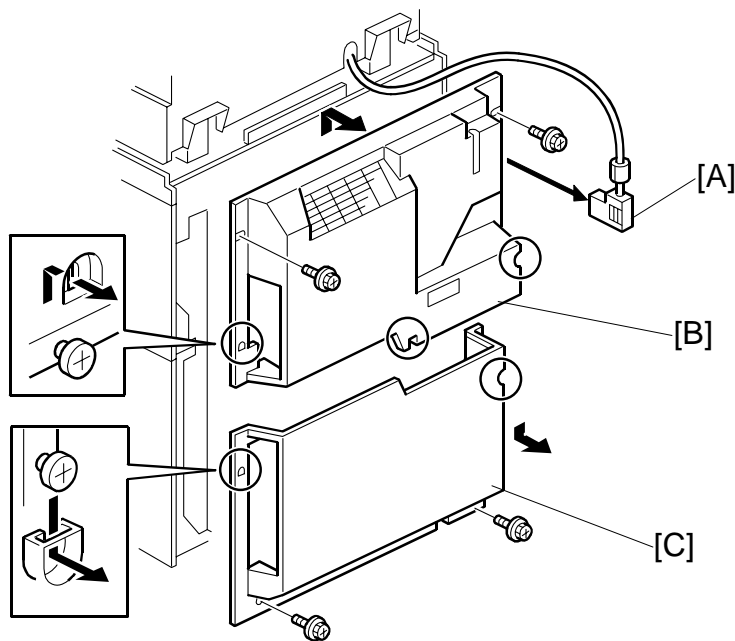


Model: Martini-C3	Date: 4-Dec-06	No.: RB246015
-------------------	----------------	---------------

Installation Procedure

G3 Board Installation

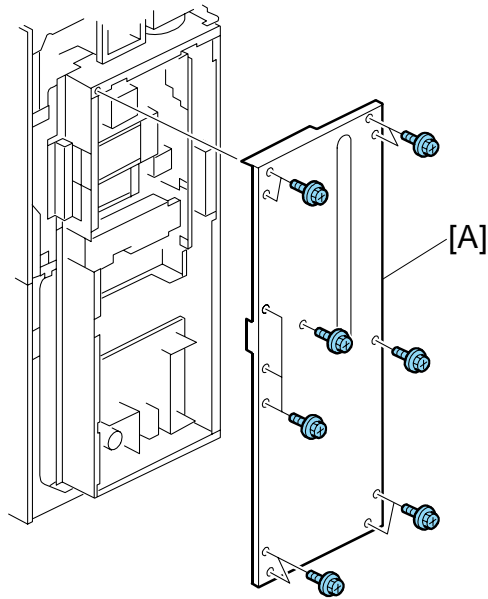
<p>⚠ CAUTION</p> <p>Before installing this optional unit,</p> <ol style="list-style-type: none"> 1) Print out all data in the printer buffer. 2) Turn off the main switch and disconnect the power cord and the network cable.
--



B820R102.WMF

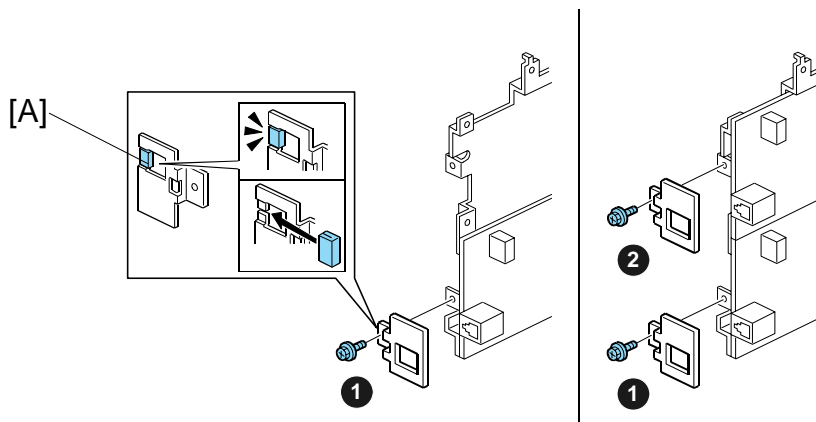
1. Disconnect the ADF connector [A].
2. Remove the rear upper cover [B] (⚙ x 2)
 - Slide down to remove.
 - When re-attaching, before tightening the screws make sure that the tabs on the cover are engaged with the shoulder screws.
3. Remove the rear lower cover [C] (⚙ x 2)
 - When re-attaching, before tightening the screws make sure that the tabs on the cover are engaged with the shoulder screws.

Model: Martini-C3	Date: 4-Dec-06	No.: RB246015
-------------------	----------------	---------------



B820R103.WMF

4. Remove the controller box cover [A] (⌀ x13).



B820R106.WMF

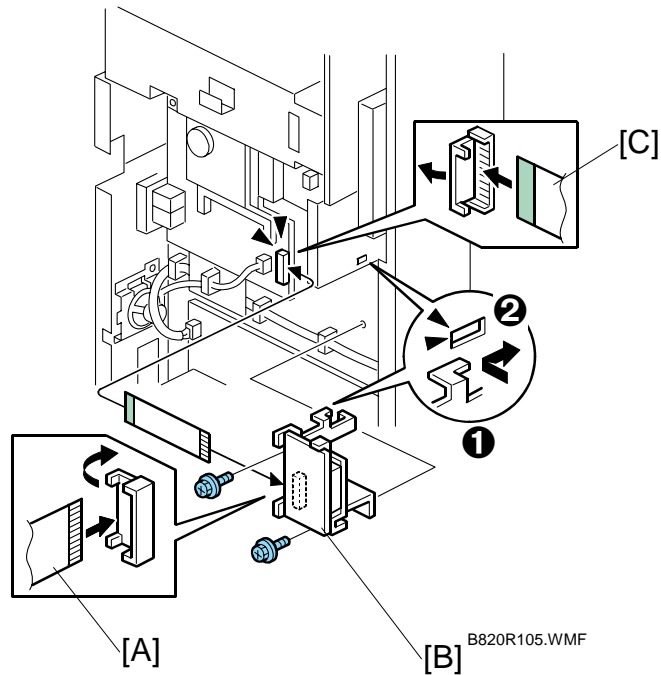
5. If installing a single-line G3, remove only one blind cover ❶.

-or-

If installing a dual-line G3, remove two blind covers ❶ and ❷.

NOTE: Make sure the protective sleeve [A] is attached properly.

Model: Martini-C3	Date: 4-Dec-06	No.: RB246015
-------------------	----------------	---------------

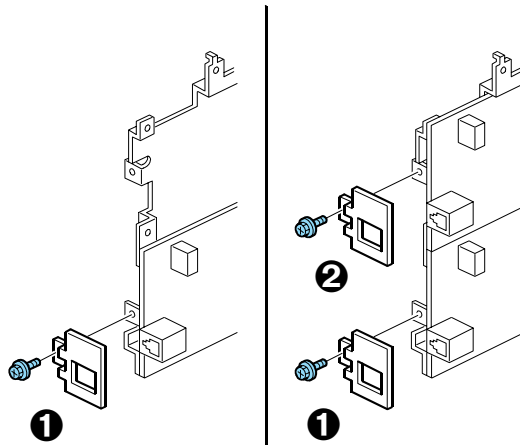


6. Connect the FFC [A] (Flat Film Connector) to the CCU drive board [B].
Important: Connect the FFC with the green, insulated side visible and the bare connector strip down so it touches the connector strip of the board.

7. Attach the CCU drive board [B] to the machine
 - Set the hook ❶ of the bracket in the slot ❷ in the frame.
 - Fasten the CCU drive board with the screws (⚙️ x2).

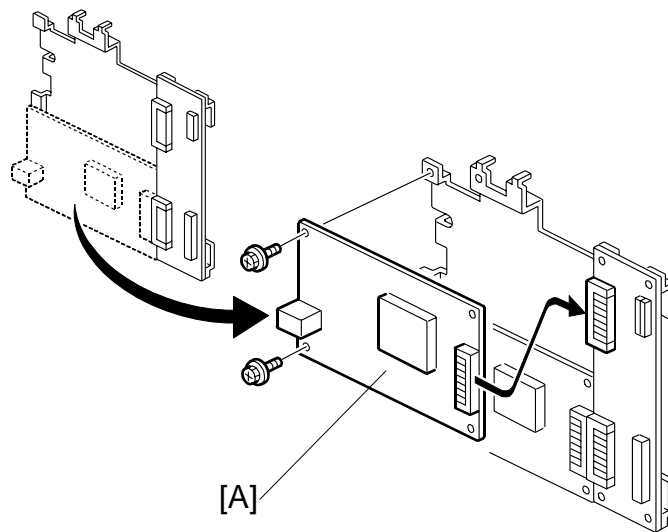
8. Connect the other end of the FFC [C] to the FCU.
Important: Connect the FFC with the green, insulated side visible and the bare connector strip down so it touches the connector strip of the board.

Model: Martini-C3	Date: 4-Dec-06	No.: RB246015
-------------------	----------------	---------------



B820R106.WMF

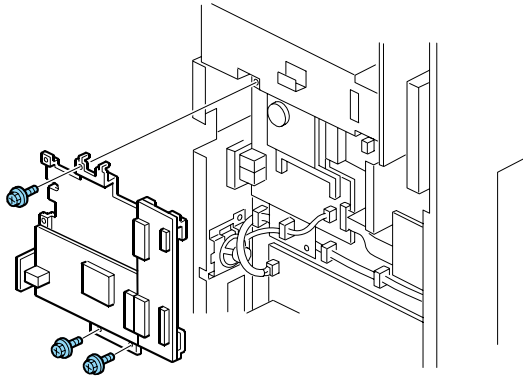
9. Attach the connector bracket to the G3 expansion board (⚙️ x1).
10. If one G3 line is being installed, attach the connector bracket ❶ as shown on the left.
-or-
If two G3 lines are being installed, attach the connector brackets ❶, ❷ as shown on the right.



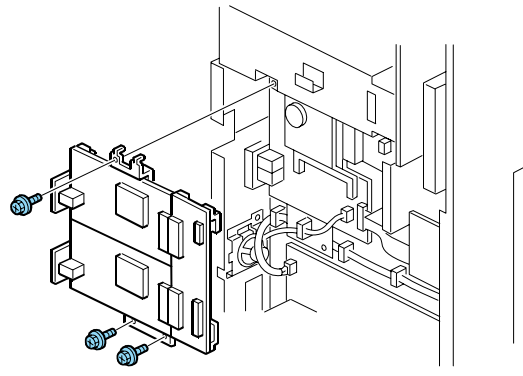
B820R107.WMF

11. If only one G3 line is being installed, go to the next step.
-or-
If two lines are being installed, insert the 2nd G3 board [A] into the empty slot of the interface unit and fasten it (⚙️ x2).

Model: Martini-C3	Date: 4-Dec-06	No.: RB246015
-------------------	----------------	---------------



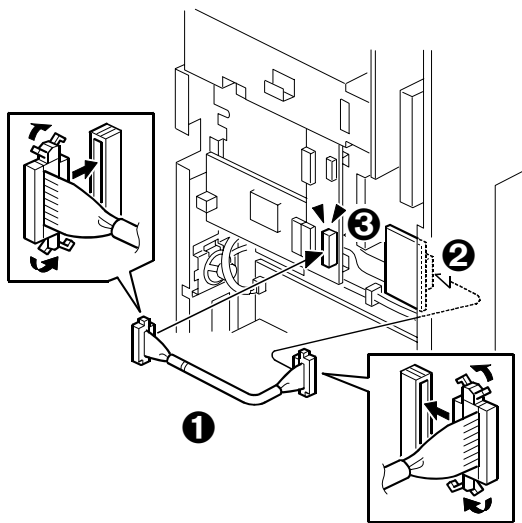
B820R108.WMF



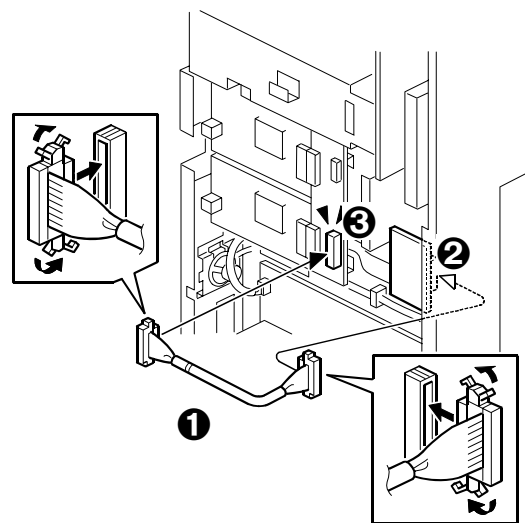
B820R109.WMF

12. Attach the G3 interface unit (x3)

NOTE: The illustration on the left shows the single G3 board installation and the illustration on the right shows the dual G3 board installation.



B820R110.WMF



B820R111.WMF

13. Connect the CCUIF harness ❶ to the CCU drive board ❷ and the CCU I/F ❸.

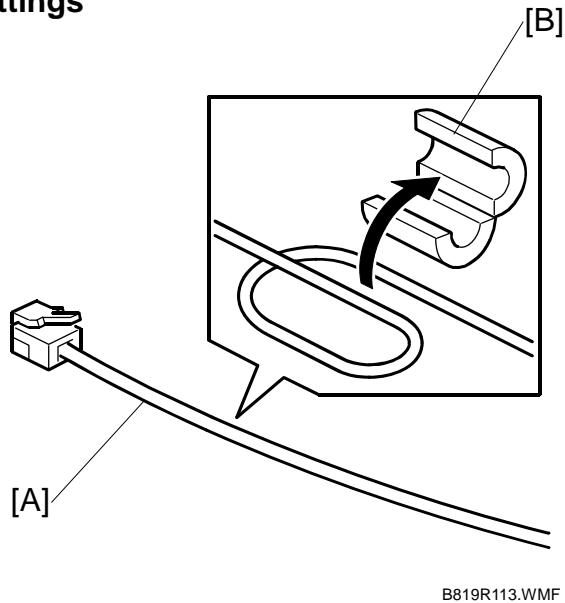
NOTE: The illustration on the left shows the single G3 board installation and the illustration on the right shows the dual G3 board installation.

14. Reinstall all covers and reconnect the ADF cable.

15. Attach the FCC decal to the rear cover of the machine.

Model: Martini-C3	Date: 4-Dec-06	No.: RB246015
-------------------	----------------	---------------

Line Connection and Settings



B819R113.WMF

1. Loop one end of the telephone cable [A] once, then enclose it with the ferrite core [B] as shown.

NOTE:

- Attach the ferrite core at least 9 cm (3.5 in.) from the connector.
- Attach a ferrite core to the 2nd G3 line if two G3 boards are installed.

2. Connect the telephone cable to "LINE 2" jack.
-or-

If dual G3 boards are installed, connect the cables to "LINE 2" and "LINE 3" jacks.

3. Connect the machine power cord to the power supply, then turn on the main power switch.
4. Enter the Service Mode.
 - Push [Reset], enter "107", then hold down "Clear/Reset" for at least 3 sec.
 - Touch "Fax SP"

Model: Martini-C3	Date: 4-Dec-06	No.: RB246015
-------------------	----------------	---------------

5. Do these communication switch settings:

SP1104-23 (Switch 16)	Set Bit 1 "1".
	Set Bit 3 "1" if two G3 boards are installed.

6. Exit the Service Mode and turn the machine off/on with the main power switch.
7. Do SP5990-001 to print the system parameter list, then confirm that "G3" is listed as an option.
8. Enter the Service Mode and set the items required for PSTN communication.
 - If one G3 line is installed, use SP3103 (PSTN-1 Port Settings) to do the PSTN settings.
 - If two G3 lines are installed, use SP3103 (PSTN-1 Port Settings) and SP3104 (PSTN-2 Port Settings) to do the PSTN settings for the first and second G3 lines.

Model: Martini-C3		Date: 05-Dec-06	No.: RB246016
Subject: Firmware Release History (FAX)		Prepared by: S. Watanabe	
From: 2nd Tech Support Sec. Service Support Dept.			
Classification:	<input type="checkbox"/> Troubleshooting <input type="checkbox"/> Mechanical <input type="checkbox"/> Paper path <input type="checkbox"/> Product Safety	<input type="checkbox"/> Part information <input type="checkbox"/> Electrical <input type="checkbox"/> Transmit/receive <input checked="" type="checkbox"/> Other ()	<input type="checkbox"/> Action required <input type="checkbox"/> Service manual revision <input type="checkbox"/> Retrofit information

This RTB has been issued to announce the firmware release information for the FAX.

Version	Program No.	C. SUM	Effective Date
3.00	B2475108C	-	November 2006 Production

Version	Symptom Corrected
3.00	1st Mass Production

Model: Martini-C3		Date: 07-Dec-06	No.: RB246017
Subject: Firmware Release History (FCU)		Prepared by: S. Watanabe	
From: 2nd Tech Support Sec. Service Support Dept.			
Classification:	<input type="checkbox"/> Troubleshooting <input type="checkbox"/> Mechanical <input type="checkbox"/> Paper path <input type="checkbox"/> Product Safety	<input type="checkbox"/> Part information <input type="checkbox"/> Electrical <input type="checkbox"/> Transmit/receive <input checked="" type="checkbox"/> Other ()	<input type="checkbox"/> Action required <input type="checkbox"/> Service manual revision <input type="checkbox"/> Retrofit information

This RTB has been issued to announce the firmware release information for the FCU.

Version	Program No.	C. SUM	Effective Date
<i>01.02.00</i>	<i>B8195571</i>	-	<i>November 2006 Production</i>

Version	Symptom Corrected
<i>01.02.00</i>	<i>1st Mass Production</i>

Reissued: 18-Dec-06

Model: Martini-C3	Date: 4-Dec-06	No.: RB246015a
-------------------	----------------	----------------

Cut-in Serial Numbers

Note: The following units have a green sticker on the outside box.

MODEL NAME	DESTINATION	CODE	SERIAL NO.
<i>MT-C3a</i>	<i>USA</i>	<i>B246-17</i>	<i>L7765900001 -</i>
<i>MT-C3b</i>	<i>USA</i>	<i>B248-17</i>	<i>L7865900001 -</i>
<i>MT-C3c</i>	<i>USA</i>	<i>B249-17</i>	<i>L7965900001 -</i>
<i>MT-C3a MFP</i>	<i>USA</i>	<i>B250-17</i>	<i>L8065900001 -</i>
<i>MT-C3b MFP</i>	<i>USA</i>	<i>B252-17</i>	<i>L8165900001 -</i>
<i>MT-C3c MFP</i>	<i>USA</i>	<i>B253-17</i>	<i>L8265900001 -</i>
<i>Printer/Scanner Unit</i>	<i>USA</i>	<i>B841-17</i>	<i>L8565900001 -</i>
<i>MT-C3a</i>	<i>Europe (Infotec)</i>	<i>B246-66</i>	<i>8M13260001 -</i>
<i>MT-C3b</i>	<i>Europe (Infotec)</i>	<i>B248-66</i>	<i>8M23260001 -</i>
<i>MT-C3c</i>	<i>Europe (Infotec)</i>	<i>B249-66</i>	<i>8M33260001 -</i>
<i>Printer/Scanner Unit</i>	<i>Europe (Infotec)</i>	<i>B841-26</i>	<i>L8563600001 -</i>
<i>MT-C3a</i>	<i>Europe</i>	<i>B246-67</i>	<i>L7763600001 -</i>
<i>MT-C3b</i>	<i>Europe</i>	<i>B248-67</i>	<i>L7863600001 -</i>
<i>MT-C3c</i>	<i>Europe</i>	<i>B249-67</i>	<i>L7963600001 -</i>
<i>Printer/Scanner Unit</i>	<i>Europe (NRG)</i>	<i>B841-22</i>	<i>L8563600001 -</i>
<i>Printer/Scanner Unit</i>	<i>Europe (Lanier)</i>	<i>B841-24</i>	<i>L8563600001 -</i>
<i>Printer/Scanner Unit</i>	<i>Europe</i>	<i>B841-27</i>	<i>L8563600001 -</i>
<i>MT-C3a</i>	<i>Asia</i>	<i>B246-29</i>	<i>L7761100017 -</i>
<i>MT-C3b</i>	<i>Asia</i>	<i>B248-29</i>	<i>L7861100005 -</i>
<i>MT-C3c</i>	<i>Asia</i>	<i>B249-29</i>	<i>L7961100003 -</i>
<i>Printer/Scanner Unit</i>	<i>Asia</i>	<i>B841-29</i>	<i>B8412901136 -</i>